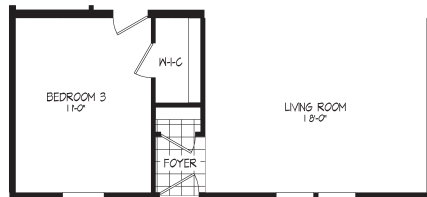


LANDMARK SERIES

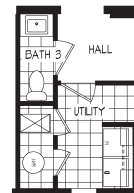


50TH ANNIVERSARY MOD

54LDK32643AM | 3 beds | 2 baths | 1,920 sq. ft.



CRAWLSPACE OPTION



HALF BATH /
FURNACE / WTR HEATER OPT.

Standard Features

INTERIOR

- Flat Ceiling Throughout
- Shaw® Carpet with 8 lb. Pad
- Shaw® Vinyl Flooring
- Textured Gypsum Ceiling
- Finish Drywall to Ceiling
- 8' Sidewall Height
- Textured Drywall Throughout
- Wire Vented Shelving - Linens and Pantries
- Hollow Core White Passage Doors
- Perimeter Heat Registers
- White DuraCraft® Trim Package Throughout
- 3 LED Can Lights in Kitchen
- 2 LED Can Lights in Dining Room
- 1 LED Can Light in Hall (2 if hall is greater than 10')
- 1 LED Can Lights in Utility Room
- LED Can Lights Throughout

KITCHEN

- Drawer Over Door Cabinet Construction
- Suny Valley Doors and Drawers
- Hardwood Cabinet Fronts
- 42" Overhead Cabinets with Finished Backs
- 2 Adjustable Shelves in Overhead Cabinets
- Brushed Satin Nickel Cabinet Door and Drawer Pulls
- Concealed Cabinet Door Hinges
- Refrigerator Overhead Cabinet
- Stainless-Steel Sink
- Single Lever Faucet with Detached Sprayer
- Receptacle with Ground Fault Interrupter
- Pot and Pan Drawers
- Crescent Edge
- 1 Row Ceramic Backsplash
- Soft Closed Drawer Throughout

APPLIANCES

- Industrial Range Hood
- 27 Cu. Ft. SxS with Ice Maker SS
- 30" Free Standing Gas Range SS
- 40 Gallon Electric Water Heater
- Hi Eff Gas Furnace with In-Floor Duct System

BEDROOMS

- Smoke Detector - All Bedrooms
- Egress Window - All Bedrooms
- Ceiling Light - All Bedrooms
- Wire Self - All Bedroom Wardrobes

BATHS

- Suny Valley Doors and Drawers
- Hardwood Cabinet Fronts
- Square Lavs with Dual Control Faucets
- 60" Fiberglass Shower
- Single Lever Tub/Shower Faucets
- 60" 1pc Fiberglass Tub/Shower with Certain and Rod - BA #2
- 36" Vanity Height - All Baths
- Framed Mirror Over Vanity
- Elongated Stools
- Receptacle with Ground Fault Interrupter
- Broan Fan with LED Light - All Baths
- Crescent Edge Counters
- 1 Row Ceramic Backsplash

INSULATION

- Fiberglass Insulated Heat Duct (Saves up to 18% Energy Costs)
- ENERGY STAR® with Hi Eff Gas Furnace
- ENERGY STAR® Ready Rheem with Electric Furnace

UTILITY

- 200 AMP Service Box with 2nd Conduit
- Black Gas Piping with Valve at Furnace & Range
- Copper Wiring Throughout - Fully Grounded
- Class "A" Lined Furnace and Water Heater Closet
- Wire and Plumb for Washer
- Wire and Vent for Dryer
- Vented Wire Shelf in Laundry Area
- Rocker-Type Light Switches
- Main Water Shut-Off Valve
- Water Shut-Off Valves Lavs & Stools
- Carbon Monoxide Detector
- AC Disconnect

EXTERIOR

- 36" 6-Panel Fiberglass Front Door with Deadbolt
- 36" 6-Panel Fiberglass Rear Door with Deadbolt
- Vinyl Lap Siding with Structural Sheathing
- Windwrap Exterior Walls
- 3 1/2" Vinyl Trim around Windows and All Exterior Doors
- 2 Exterior Receptacles with GFI
- Vinyl Low E Windows
- Exterior Frost Proof Faucet Near Kitchen Sink Ice Shield

CONSTRUCTION

- 5/12 Roof Pitch
- Steel I-Beam Frame
- Tongue & Groove Floor Decking
- 2" x 8" Floor Joists - 16" O.C.
- 2" x 6" Sidewalls Studs - 16" O.C.
- Truss-Type Rafters (30 lb. Roof Load)
- Self-Sealing Architectural Style Shingles
- Continuous Ridge Vent Roof Ventilation
- Full-Length Structural Beam
- HUD Seal

SCHULT ESSENTIALS

- Meets Zone III ENERGY STAR® Ready
- Additional Home Insulation for Increase R-Value: R-45, R-21, R-22