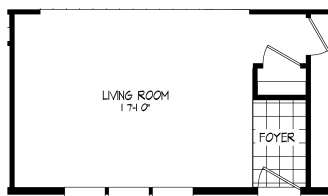
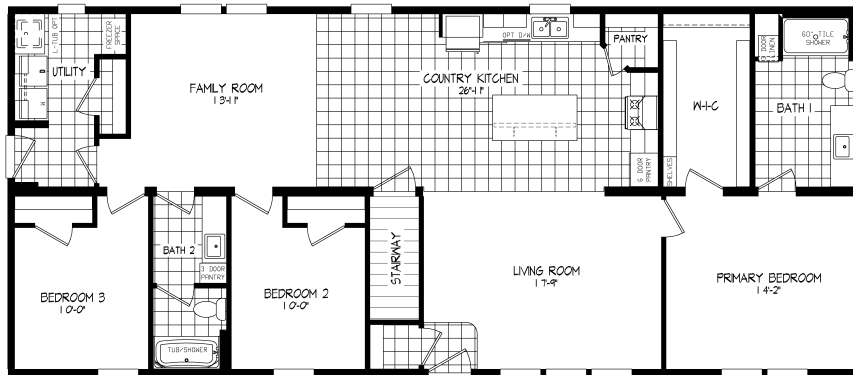


LEGEND SERIES

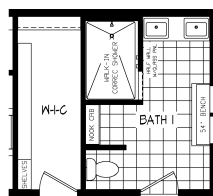


Legend 327 MOD

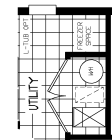
54LGD2864BM / 3 beds / 2 baths / 1,770 sq. ft.



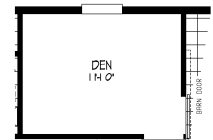
CRAWLSPACE OPT



WALK-IN SHOWER OPT.



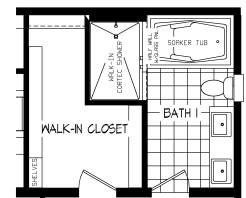
FURNACE / WTR HEATER OPT.



DEN OPT.



BEDROOM 4 OPT.



WALK-IN SHOWER
& SOAKER TUB OPT.

Standard Features

INTERIOR

- Flat Ceiling Throughout
- Shaw® Carpet with 8 lb Pad
- Shaw® Vinyl Flooring
- Textured Drywall Throughout
- Tape and Textured Gypsum Ceiling
- Finished Drywall to ceiling
- 8' Sidewall Height
- Vented Wire Shelving – Linens, Pantries and Wardrobes
- Hollow Core White Passage Doors
- Perimeter Heat Registers
- Solid Hardwood Craftsman Style Kaffe Trim T/O
- LED Can Lights Throughout
- 3 LED Can Light Kit
- 2 LED Can Light DR
- 1 LED Can Light Hall (2 if hall is greater than 10')
- 1 LED Can Light Utility Room
- 36" Countertop Height T/O

KITCHEN

- Drawer Over Door Cabinet Construction
- KCMA Kitchen & Bath Cabinets – N/A with DuraCraft
- Deluxe Kaffe Shaker Doors and Drawers
- 42" Overhead Cabinets with Two Adjustable Shelves and
- Finished Backs
- Hardwood Cabinet Fronts
- Brushed Satin Nickel Cabinet Door and Drawer Pulls
- Concealed Cabinet Door Hinges
- Ball Bearing Roller Guide Drawer System
- Soft-Close Drawers
- Roll-out Center and Bottom Shelves in Base Cabinet
- Refrigerator Overhead Cabinet
- Stainless-Steel Sink
- Single Lever Faucet w/detached sprayer
- Ceramic to Bottom of Overheads
- Crescent Edge Countertop

KITCHEN (cont)

- Pot and Pan Drawers
- Kitchen Accessories Package
- Cutting Board with Caddy
- Drawer Plate Organizer

BEDROOMS

- Smoke Detector – All bedrooms
- Egress Window – All bedrooms
- LED Ceiling Lights T/O
- Wire Shelf – All bedroom Wardrobes

APPLIANCES

- Contemporary Range Hood
- Samsung® 27 Cu. Ft. Refrigerator SxS
- Samsung® 30" Gas Range SS
- Samsung® 53 DBA Dishwasher

BATHS

- Deluxe Kaffe Shaker Vanity Doors and Drawers
- Hardwood Cabinet Fronts
- Drawer Bank – Bath #1
- Square Lavs with Dual Lever Faucets
- 60" Shaw COREtec Shower w/ swing glass door, 1 recessed shelf and Std shower head – Bath #1
- 60" 1-Piece Fiberglass Tub/Shower – Bath 2
- Single Lever Tub/Shower Faucets
- 36" Vanity Height – All Baths
- Framed Mirror Over Vanity with Decorative Light Above – All Baths
- Elongated Stools
- Shut-off Valves Throughout
- Receptacle with Ground Fault Interrupter
- Broan Fan with LED Light – All Baths
- 1 Row Ceramic Backsplash and Crescent Edge

UTILITY

- 200 AMP Service with 2nd Conduit Through Floor
- Copper Wiring Throughout – Fully Grounded
- Wire and Plumb for Washer
- Wire and Vent for Dryer
- Laundry Overhead Cabinet
- 3-Way Switch in Utility Room and Stairwell
- Rocker-Type Light Switches
- GFI Recept – Kitchen Sink Area
- Water Shut-Off Valves T/O
- Carbon Monoxide Detector
- AC Disconnect

INSULATION

- R-5 Front & Rear Bay Rim Joist Insulation
- Enerfoam Door and Window Sealer
- *R-50 Blown Ceiling Insulation with Sprayed Vapor Barrier
- *R-21 Fiberglass Insulation in Walls
- *The higher the R-Value, the greater the insulation power

EXTERIOR

- 36" 6-Panel Front Door with Deadbolt and Storm
- 36" 6-Panel Rear Door with Deadbolt and Storm
- Contractor Locksets
- Deluxe Light at All Exterior Doors
- Vinyl Lap Siding with Structural Sheathing
- 3-1/2" Vinyl Trim Windows & Front Door
- 2 Exterior Receptacles with GFI 1 Each Side of Home
- Vinyl Windows with Low E Windows
- Exterior Frost Proof Faucet Near Kitchen Sink
- Windwrap Exterior Walls
- Ice Shield

CONSTRUCTION

- Modular Construction
- Built to 60# Ground Snow Load
- Triple Rim Joists at Mating Line
- Metal X-Bracing in Floor System
- Tongue & Groove Floor Decking
- 2" x 10" Floor Joist with Double Rim Joists – 16" O.C.
- Joist Hangers at Mating Line
- 2" x 6" Sidewall Studs – 16" O.C.
- Full-Length Structural Ridge Beam
- 5/12 Pitch with 16" Overhang on 28 Wides
- Continuous Ridge Vent Roof Ventilation
- Self-Sealing Architectural Style Shingles
- Basement Stairwell

Schult Essentials

- ecobee® Thermostat
- Ring® Doorbell
- Essential Grid Windows
- Mortised Heavy-Duty Interior Door Hinges
- Pfister® Faucets
- Kwikset® exterior contractor lock sets
- Kwikset® interior door knobs