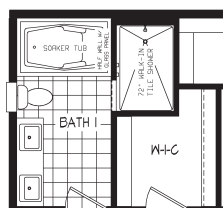
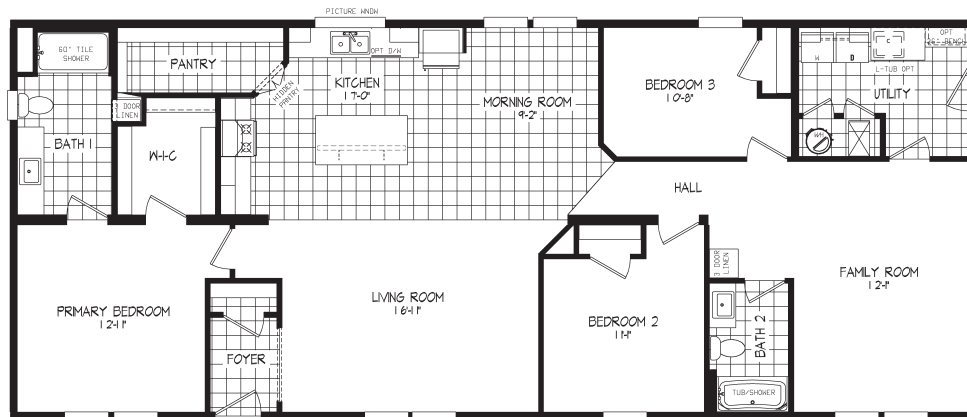


**LEGEND SERIES**

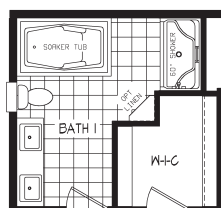


# Legend 413-1

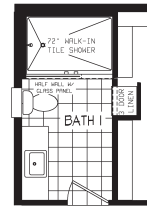
54LGD28673AH / 3 beds / 2 baths / 1,853 sq. ft.



SOAKER TUB & 72" WALK-IN  
TILE SHOWER OPT



SOAKER TUB &  
60" SHOWER OPT



72" WALK-IN TILE SHOWER OPT

# Standard Features

## INTERIOR

- Flat Ceiling Throughout
- Shaw Carpet with 8lb Pad
- Shaw Vinyl Flooring
- Orange Peel Gypsum Ceiling
- Finish Drywall to Ceiling
- 8' Sidewall Height
- Orange Peel Drywall T/O
- Wire Vented Shelving – Linens and Pantries
- Hollow Core White Passage Doors
- Perimeter Heat Registers
- Kaffe Wrapped Craftsman Trim Package Throughout
- 3 LED Can Lights in Kit
- 2 LED Can Lights in DR
- 1 LED Can Light in Hall (2 if hall is greater than 10')
- 1 LED Can Light UTR
- LED Can Lights Throughout
- Kwikset® interior door knobs

## KITCHEN

- Full Ceramic Backsplash in Kitchen
- Drawer Over Door Cabinet Construction
- Deluxe Kaffe Doors and Drawers
- Hardwood Cabinet Fronts
- 42" Overhead Cabinets with Finished Backs
- 2 Adjustable Shelves in Overhead Cabinets
- Brushed Satin Nickel Cabinet Door & Drawer Pulls
- Soft Close Drawers
- Refrigerator Overhead Cabinet
- Stainless-Steel Sink
- Single Lever Faucet w/Detached sprayer
- Receptacle with Ground Fault Interrupter
- Pot and Pan Drawers
- Crescent Edge
- Pull Out Base Shelves T/O

## APPLIANCES

- Samsung® 27 Cu. Ft. SS
- Samsung® Gas Range
- Samsung® Dishwasher 53 DBA
- Contemporary Range Hood
- 40 Gallon Hybrid Water Heater w/Heat Pump
- Hi Eff Gas Furnace with In-Floor Duct System

## BATHS

- Deluxe Kaffe Doors and Drawers
- Hardwood Cabinet Fronts
- Square Lavs with Dual Control Faucets
- 60" Shaw COREtec Shower with Swinging glass door and 1 recessed shelf in BA1
- Single Lever Tub/Shower Faucets
- 60" 1pc Fiber Glass Tub/Shower w/Curtain and Rod in BA2
- 36" Vanity Height – All Baths
- Framed Mirror Over Vanity
- Elongated Stools
- Receptacle with Ground Fault Interrupter
- Broan Fan with LED Light – All Baths
- Brushed Satin Nickel Towel Bar and Tissue Holder – All Baths
- Crescent Edge Counters
- 1 Row Ceramic Backsplash

## UTILITY

- 200 AMP Service Box with 2nd Conduit
- Black Gas Piping with Valve at Furnace & Range
- Copper Wiring Throughout – Fully Grounded
- Class "A" Lined Furnace and Water Heater Closet
- Wire and Plumb for Washer
- Wire and Vent for Dryer
- Vented Wire Shelf in Laundry Area
- Rocker-Type Light Switches
- Main Water Shut-off Valve
- Water Shut-Off Valves Lavs & Stools
- Carbon Monoxide Detector
- AC Disconnect

## BEDROOMS

- Wire Shelf – Bedroom Wardrobes
- Smoke Detector – All bedrooms
- Egress Window – All bedrooms
- LED Ceiling Lights T/O
- Passive Air Quality Improvement System

## EXTERIOR

- 36" 6-Panel Front Door with Deadbolt and Storm
- 36" 6-Panel Rear Door with Deadbolt and Storm
- Upgraded Light at Front and Rear Doors
- Vinyl Lap Siding with Structural Sheathing
- Windwrap Exterior Walls
- 3-1/2" Vinyl Trim Windows & Front Door
- 2 Exterior Receptacles with GFI
- Exterior Frost Proof Faucet Near Kitchen Sink
- Ice Shield
- 20' Open Dormer
- Kwikset® exterior contractor lock sets

## CONSTRUCTION

- Steel I-Beam Frame
- Tongue & Groove Floor Decking
- 2" x 8" Floor Joists – 16" O.C.
- 2" x 6" Sidewalls Studs – 16" O.C.
- Truss-Type Rafters (30# Roof Load)
- Continuous Ridge Vent Roof Ventilation
- Full-Length Structural Beam
- HUD Seal

## eBuilt®

- Meets Net Zero Energy Ready Standards
- Argon gas low-E windows
- Solar-ready
- Whole house ventilation system
- Additional home insulation for increased R-value

Scan for an  
eBuilt® home tour!



**Our homes include eBuilt features**

*The home series, floor plans, photos, renderings, specifications, features, pricing, materials and availability shown will vary by retailer and state, and are subject to change without notice.*