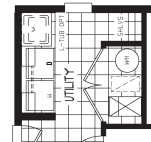
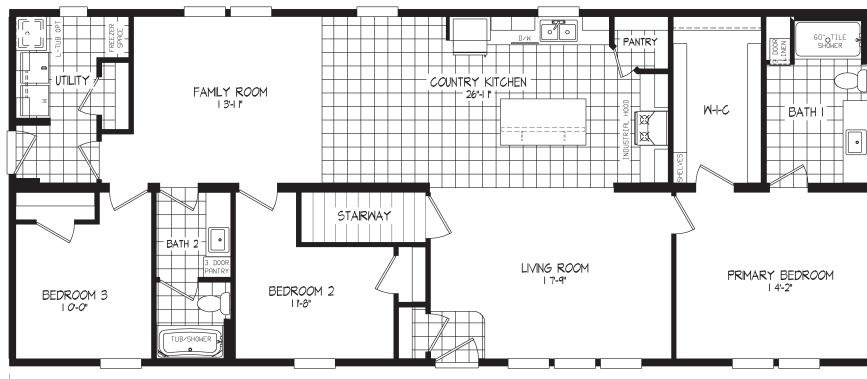


LEGEND SERIES

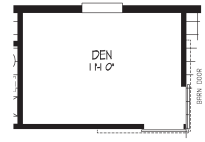


Legend 327-1 MOD

54LGD28643BM / 3 beds / 2 baths / 1,685 sq. ft.



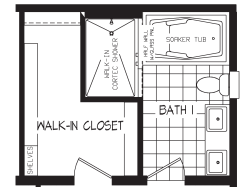
FURNACE / WTR HEATER OPT.



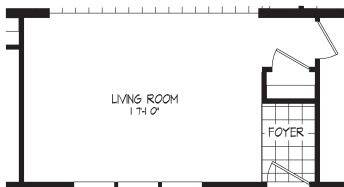
DEN OPT.



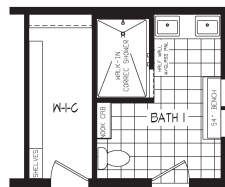
BEDROOM 4 OPT.



WALK-IN SHOWER
& SOAKER TUB OPT.



CRAWLSPACE OPT



WALK-IN SHOWER OPT.

Standard Features

INTERIOR

- Flat Ceiling Throughout
- Shaw® Carpet with 8 lb. Pad
- Shaw® Vinyl Flooring
- Orange Peel Drywall Throughout
- Orange Peel Gypsum Ceiling
- Finished Drywall to ceiling
- 8' Sidewall Height
- Vented Wire Shelving – Linens and Pantries
- Hollow Core White Passage Doors
- Perimeter Heat Registers
- White DuraCraft® Trim Package Throughout
- LED Can Lights Throughout
- 3 LED Can Lights in Kitchen
- 2 LED Can Lights in Dining Room
- 1 LED Can Light Hall (2 if hall is greater than 10')
- 1 LED Can Light in Utility Room
- 36" Countertop Height Throughout

KITCHEN

- Drawer Over Door Cabinet Construction
- KCMA Kitchen & Bath Cabinets – N/A With DuraCraft®
- Suny Valley Doors and Drawers
- 42" Overhead Cabinets with Two Adjustable Shelves and Finished Backs
- Hardwood Cabinet Fronts
- Brushed Satin Nickel Cabinet Door and Drawer Pulls
- Concealed Cabinet Door Hinges
- Ball Bearing Roller Guide Drawer System
- Soft-Close Drawers
- Roll-out Center and Bottom Shelves in Base Cabinet
- Refrigerator Overhead Cabinet
- Stainless-Steel Sink
- Single Lever Faucet w/detached sprayer
- Ceramic to Bottom of Overheads
- Crescent Edge Countertop

KITCHEN (cont)

- Pot and Pan Drawers
- Kitchen Accessories Package
- Cutting Board with Caddy
- Drawer Plate Organizer

APPLIANCES

- Industrial Range Hood
- Samsung® 27 Cu. Ft. Refrigerator SxS
- Samsung® 30" Gas Range SS
- Samsung® 53 DBA Dishwasher

BEDROOMS

- Smoke Detector – All Bedrooms
- Egress Window – All Bedrooms
- LED Ceiling Lights Throughout
- Wire Shelf – All Bedroom Wardrobes

BATHS

- Suny Valley Vanity Doors and Drawers
- Hardwood Cabinet Fronts
- Drawer Bank – Bath #1
- Square Lavs with Dual Lever Faucets
- 60" Shaw® Shower with Swing Glass Door, 1 Recessed Shelf – Bath #1
- 60" 1-Piece Fiberglass Tub/Shower – Bath #2
- Single Lever Tub/Shower Faucets
- 36" Vanity Height – All Baths
- Framed Mirror Over Vanity with Decorative Light Above – All Baths
- Elongated Stools
- Shut-off Valves Throughout
- Receptacle with Ground Fault Interrupter
- Broan Fan with LED Light – All Baths
- 1 Row Ceramic Backsplash and Crescent Edge

UTILITY

- 200 AMP Service with 2nd Conduit Through Floor
- Copper Wiring Throughout – Fully Grounded
- Wire and Plumb for Washer
- Wire and Vent for Dryer
- Laundry Overhead Cabinet
- 3-Way Switch in Utility Room and Stairwell
- Rocker-Type Light Switches
- GFI Recept – Kitchen Sink Area
- Water Shut-Off Valves Throughout
- Carbon Monoxide Detector
- AC Disconnect – Optional
- CAT 6 with Outlet

INSULATION

- R-5 Front & Rear Bay Rim Joist Insulation
- Enerfoam Door and Window Sealer
- *R-50 Blown Ceiling Insulation with Sprayed Vapor Barrier
- *R-21 Fiberglass Insulation in Walls
- *The higher the R-Value, the greater the insulation power

EXTERIOR

- 36" 6-Panel Fiberglass Front Door with Deadbolt and Storm
- 36" 6-Panel Fiberglass Rear Door with Deadbolt and Storm
- Contractor Locksets
- Deluxe Light at All Exterior Doors
- Vinyl Lap Siding with Structural Sheathing
- 3-1/2" Vinyl Trim Windows & Exterior Doors
- 2 Exterior Receptacles with GFI 1 Each Side of Home
- Vinyl Windows with Low E Windows
- Exterior Frost Proof Faucet Near Kitchen Sink
- Windwrap Exterior Walls
- Ice Shield

CONSTRUCTION

- Modular Construction
- Built to 60 lb. Ground Snow Load
- Triple Rim Joists at Mating Line
- Metal X-Bracing in Floor System
- Tongue & Groove Floor Decking
- 2" x 10" Floor Joist with Double Rim Joists – 16" O.C.
- Joist Hangers at Mating Line
- 2" x 6" Sidewall Studs – 16" O.C.
- Full-Length Structural Ridge Beam
- 5/12 Pitch with 16" Overhang on 28 Wides
- Continuous Ridge Vent Roof Ventilation
- Self-Sealing Architectural Style Shingles
- Basement Stairwell

Schult Essentials

- ecobee® Thermostat
- Ring® Doorbell
- 3/1 Grid Windows
- Mortised Heavy-Duty Interior Door Hinges
- Pfister® Faucets
- Kwikset® Exterior Contractor Lock Sets
- Kwikset® Interior Doorknobs