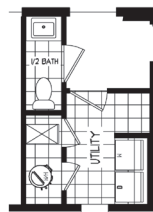


LANDMARK SERIES



50TH ANNIVERSARY

54LDK32643AH | 3 beds | 2 baths | 1,920 sq. ft.



HALF BATH OPT

Standard Features

INTERIOR

- Flat Ceiling Throughout
- Shaw Carpet with 8lb Pad
- Shaw Vinyl Flooring
- Textured Gypsum Ceiling
- Finish Drywall to Ceiling
- 8' Sidewall Height
- Textured Drywall T/O
- Wire Vented Shelving - Linens and Pantries
- Hollow Core White Passage Doors
- Perimeter Heat Registers
- White Duracraft Trim Package Throughout
- 3 LED Can Lights in Kit
- 2 LED Can Lights in DR
- 1 LED Can Light in Hall (2 if hall is greater than 10')
- 1 LED Can Light UTR
- LED Can Lights Throughout

KITCHEN

- Drawer Over Door Cabinet Construction
- Deluxe Kaffe Doors and Drawers
- Hardwood Cabinet Fronts
- 42" Overhead Cabinets with Finished Backs
- 2 Adjustable Shelves in Overhead Cabinets
- Brushed Satin Nickel Cabinet Door and Drawer Pulls
- Concealed Cabinet Door Hinges
- Refrigerator Overhead Cabinet
- Stainless-Steel Sink
- Single Lever Faucet w/Detached sprayer
- Receptacle with Ground Fault Interrupter
- Pot and Pan Drawers
- Crescent Edge
- 1 Row Ceramic Backsplash

BATHS

- Deluxe Kaffe Doors and Drawers
- Hardwood Cabinet Fronts
- Square Lavs with Dual Control Faucets
- 60" Fiberglass Shower
- Single Lever Tub/Shower Faucets
- 60" 1pc Fiber Glass Tub/Shower w/Curtain and Rod in BA2
- 36" Vanity Height - All Baths
- Framed Mirror Over Vanity
- Elongated Stools
- Receptacle with Ground Fault Interrupter
- Broan Fan with LED Light - All Baths
- Brushed Satin Nickel Towel Bar and Tissue Holder - All Baths
- Crescent Edge Counters
- 1 Row Ceramic Backsplash

BEDROOMS

- Wire Shelf - Bedroom Wardrobes • Smoke Detector - All bedrooms
- Egress Window - All bedrooms
- Ceiling Light - All bedrooms

INSULATION

- Fiberglass Insulated Heat Duct (Saves up to 18% Energy Costs)
- *Energy Star® w/Hi Eff Gas Furnace
- *Energy Star® NA w/Electric Furnace

UTILITY

- 200 AMP Service Box with 2nd Conduit
- Black Gas Piping with Valve at Furnace & Range
- Copper Wiring Throughout - Fully Grounded
- Class "A" Lined Furnace and Water Heater Closet
- Wire and Plumb for Washer
- Wire and Vent for Dryer
- Vented Wire Shelf in Laundry Area
- Rocker-Type Light Switches
- Main Water Shut-off Valve
- Water Shut-Off Valves Lavs & Stools
- Carbon Monoxide Detector
- AC Disconnect

APPLIANCES

- 21 Cu. Ft. w/Ice Maker SS
- 30" Free Standing Gas Range SS
- Standard Range Hood with Light SS
- 40 Gallon Electric Water Heater
- Hi Eff Gas Furnace with In-Floor Duct System
- Passive Air Quality Improvement System

EXTERIOR

- 36" 6-Panel Front Door with Deadbolt and Storm
- 36" 6-Panel Rear Door with Deadbolt and Storm
- Standard Light at All Exterior Doors
- Vinyl Lap Siding with Structural Sheathing
- Windwrap Exterior Walls
- 3-1/2" Vinyl Trim Windows & Front Door
- 2 Exterior Receptacles with GFI
- Vinyl Low E Windows (meet 2015 Energy Code)
- Exterior Frost Proof Faucet Near Kitchen Sink Ice Shield

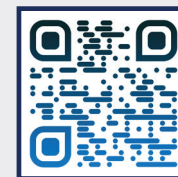
CONSTRUCTION

- 5/12 Roof Pitch
- Steel I-Beam Frame
- Tongue & Groove Floor Decking
- 2" x 8" Floor Joists - 16" O.C.
- 2" x 6" Sidewalls Studs - 16" O.C.
- Truss-Type Rafters (30# Roof Load)
- Self-Sealing Architectural Style Shingles
- Continuous Ridge Vent Roof Ventilation
- Full-Length Structural Beam
- HUD Seal

eBuilt®

- Argon gas low-E windows
- Solar-ready
- Whole house ventilation system
- Additional home insulation for increased R-value

Scan for an eBuilt® home tour!



Our homes include eBuilt features

The home series, floor plans, photos, renderings, specifications, features, pricing, materials and availability shown will vary by retailer and state, and are subject to change without notice.