

LEGEND SERIES



Legend 86

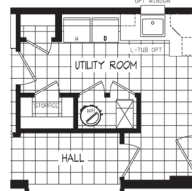
54LGD32563A / 3 beds / 2 baths / 1,680 sq. ft



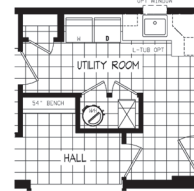
DELUXE BATH W/ 72"
WALK-IN TILE SHOWER OPT



DELUX BATH W/
60" SHOWER &
SOAKER TUB OPT



STORAGE ROOM OPT
REPLACES DESK



54" BENCH OPT
REPLACES DESK

Standard Features

INTERIOR

- Flat Ceiling Throughout
- Shaw Carpet with 8lb Pad
- Shaw Vinyl Flooring
- Orange Peel Gypsum Ceiling
- Finish Drywall to Ceiling
- 8' Sidewall Height
- Orange Peel Drywall T/O
- Wire Vented Shelving – Linens and Pantries
- Hollow Core White Passage Doors
- Perimeter Heat Registers
- Kaffe Wrapped Craftsman Trim Package Throughout
- 3 LED Can Lights in Kit
- 2 LED Can Lights in DR
- 1 LED Can Light in Hall (2 if hall is greater than 10')
- 1 LED Can Light UTR
- LED Can Lights Throughout
- Kwikset® interior door knobs

KITCHEN

- Full Ceramic Backsplash in Kitchen
- Drawer Over Door Cabinet Construction
- Deluxe Kaffe Doors and Drawers
- Hardwood Cabinet Fronts
- 42" Overhead Cabinets with Finished Backs
- 2 Adjustable Shelves in Overhead Cabinets
- Brushed Satin Nickel Cabinet Door & Drawer Pulls
- Soft Close Drawers
- Refrigerator Overhead Cabinet
- Stainless-Steel Sink
- Single Lever Faucet w/Detached sprayer
- Receptacle with Ground Fault Interrupter
- Pot and Pan Drawers
- Crescent Edge
- Pull Out Base Shelves T/O

APPLIANCES

- Samsung® 27 Cu. Ft. SS
- Samsung® Gas Range
- Samsung® Dishwasher 53 DBA
- Contemporary Range Hood
- 40 Gallon Hybrid Water Heater w/Heat Pump
- Hi Eff Gas Furnace with In-Floor Duct System

BATHS

- Deluxe Kaffe Doors and Drawers
- Hardwood Cabinet Fronts
- Square Lavs with Dual Control Faucets
- 60" Shaw COREtec Shower with Swinging glass door and 1 recessed shelf in BA1
- Single Lever Tub/Shower Faucets
- 60" 1pc Fiber Glass Tub/Shower w/Curtain and Rod in BA2
- 36" Vanity Height – All Baths
- Framed Mirror Over Vanity
- Elongated Stools
- Receptacle with Ground Fault Interrupter
- Broan Fan with LED Light – All Baths
- Brushed Satin Nickel Towel Bar and Tissue Holder – All Baths
- Crescent Edge Counters
- 1 Row Ceramic Backsplash

UTILITY

- 200 AMP Service Box with 2nd Conduit
- Black Gas Piping with Valve at Furnace & Range
- Copper Wiring Throughout – Fully Grounded
- Class "A" Lined Furnace and Water Heater Closet
- Wire and Plumb for Washer
- Wire and Vent for Dryer
- Vented Wire Shelf in Laundry Area
- Rocker-Type Light Switches
- Main Water Shut-off Valve
- Water Shut-Off Valves Lavs & Stools
- Carbon Monoxide Detector
- AC Disconnect

BEDROOMS

- Wire Shelf – Bedroom Wardrobes
- Smoke Detector – All bedrooms
- Egress Window – All bedrooms
- LED Ceiling Lights T/O
- Passive Air Quality Improvement System

EXTERIOR

- 36" 6-Panel Front Door with Deadbolt and Storm
- 36" 6-Panel Rear Door with Deadbolt and Storm
- Upgraded Light at Front and Rear Doors
- Vinyl Lap Siding with Structural Sheathing
- Windwrap Exterior Walls
- 3-1/2" Vinyl Trim Windows & Front Door
- 2 Exterior Receptacles with GFI
- Exterior Frost Proof Faucet Near Kitchen Sink
- Ice Shield
- 20' Open Dormer
- Kwikset® exterior contractor lock sets

CONSTRUCTION

- Steel I-Beam Frame
- Tongue & Groove Floor Decking
- 2" x 8" Floor Joists – 16" O.C.
- 2" x 6" Sidewalls Studs – 16" O.C.
- Truss-Type Rafters (30# Roof Load)
- Continuous Ridge Vent Roof Ventilation
- Full-Length Structural Beam
- HUD Seal

eBuilt®

- Meets Net Zero Energy Ready Standards
- Argon gas low-E windows
- Solar-ready
- Whole house ventilation system
- Additional home insulation for increased R-value

Scan for an
eBuilt® home tour!



Our homes include eBuilt features

The home series, floor plans, photos, renderings, specifications, features, pricing, materials and availability shown will vary by retailer and state, and are subject to change without notice.