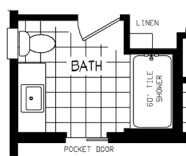
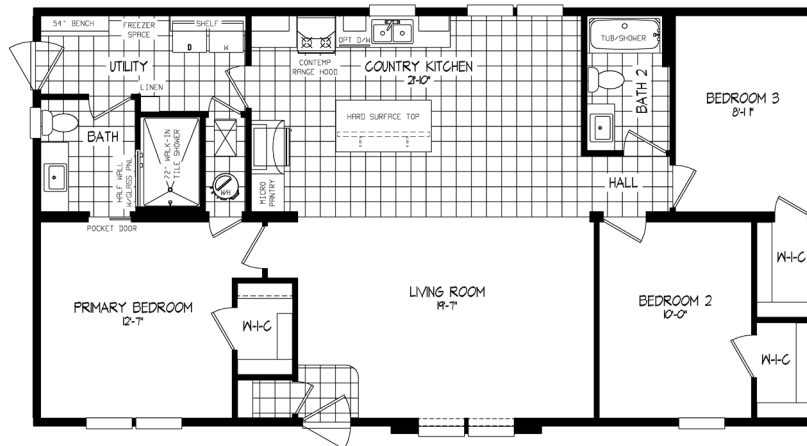


LEGACY SERIES



Legacy 405

54LGC28523AH | 3 beds | 2 baths | 1,438 sq. ft.



60" TILE SHOWER OPT

Standard Features

INTERIOR

- Flat Ceiling Throughout
- Shaw Carpet with 8 lb Pad
- Textured Gypsum Ceiling
- Shaw Vinyl Flooring
- 8' Sidewall Ceiling Height
- Drywall Throughout
- LED Can Lights Throughout
- 3 LED Can Lights in Kit
- 2 LED Can Lights in DR
- 1 LED Can Light in Hall (2 if hall is greater than 10ft)
- 1 LED Can Light UTR
- 6-Panel Hollow Core Kaffe Passage Doors
- Kaffe Wrapped Trim Pkg
- Perimeter Heat Registers
- Built-in Storage Bench in Utility Room Where Floor Plan Allows
- Pocket Door Where Floor Plan Allows
- Finish Drywall to Ceiling

KITCHEN

- Hard Surface Island Top (Where Available)
- Drawer Over Door Cabinet Construction
- Deluxe Kaffe Shaker Cabinet Doors and Drawers
- Hardwood Cabinet Fronts
- 42" Overhead Cabinets with Finished Backs
- 2 Adjustable Shelves in Overhead Cabinets
- Brushed Satin Nickel Cabinet Door and Drawer Pulls
- Concealed Cabinet Door Hinges
- Stainless-Steel Sink
- Single Lever Faucet with Detached Sprayer
- Crescent Edge
- Full Ceramic Backsplash To O/H
- Receptacle with Ground Fault Interrupter
- Pot and Pan Drawers
- Adjustable Refer Shelf - NA w/DuraCraft®
- Wire Selves in Linen and Pantry

APPLIANCES

- 21 Cu. ft. w/Ice SS
- Built-in Microwave SS
- 30" Free Standing Gas Range SS
- Industrial Range Hood
- 40-Gallon Electric Water Heater
- Hi Eff Gas Furnace with In-Floor Duct System
- Passive Air Quality Improvement System

BATHS

- 72 X 48 Walk-In Shower with 1/2 Glass wall and 1 Recessed Shelf in BA1
- 60" 1pc. Tub/Shower, includes curtain and shower rod BA2
- Deluxe Kaffe Shaker Vanity Doors and Drawers
- Hardwood Cabinet Fronts
- Square Lavs with Dual Lever Faucets
- 36" Vanity Height - All Baths
- Framed Mirror Over Vanity with Decorative Light - All Baths
- Elongated Stools
- Receptacle with Ground Fault Interrupter
- Broan Fan with LED Light - All Baths
- Brushed Satin Nickel Towel Bar and Tissue Holder - All Baths
- 1 Rows Ceramic Backsplash All Baths
- Crescent Edge Countertops

UTILITY

- 200 AMP Service with 2nd Conduit
- Black Gas Piping with Valve at Furnace and Range
- Copper Wiring Throughout - Fully Grounded
- Class "A" Lined Furnace and Water Heater Closet
- Wire and Plumb for Washer
- Wire and Vent for Dryer
- Vented Wire Shelf in Laundry Area
- Conventional wiring
- Main Water Shut-off Valve
- Water Shut-Off Valves Lavs & Stools
- Carbon Monoxide Detector
- Built-in Bench, Storage Area (Where Floor Plan Allows)

INSULATION

- Fiberglass Insulated Heat Duct (saves up to 18% in Energy Costs)
- Energy Star® w/Hi Eff Gas Furnace
- Energy Star® NA w/Electric Furnace

BEDROOMS

- Smoke Detector - All bedrooms
- Egress Window - All bedrooms
- Ceiling Light - All bedrooms
- Wood Shelves w/Rods in all Bedroom wardrobes

EXTERIOR

- 36" 6-Panel Front Door with Deadbolt and Storm
- 36" 6-Panel Rear Door with Deadbolt and Storm
- Contractor Locksets
- STD Light at All Exterior Doors
- Vinyl Lap Siding with Structural Sheathing
- Wind wrap Exterior Walls
- 3-1/2" Vinyl Trim Windows & Front Door
- 2 Exterior Receptacles with GF 1 - each side of home
- Vinyl Low E Windows (meet 2015 Energy Code)
- Exterior Frost Proof Faucet Near Kitchen Sink
- Ice Shield
- 20' Double Dormer

CONSTRUCTION

- Steel I-Beam Frame
- Tongue & Groove Floor Decking
- 2" x 8" Floor Joist - 16" O.C.
- 2" x 6" Sidewalls Studs - 16" O.C.
- Truss-Type Rafters (30# Roof Load)
- Self-Sealing Architectural Style Shingles
- Continuous Ridge Vent Roof Ventilation
- Full-Length Structural Beam
- HUD Seal

eBuilt®

- Argon gas low-E windows
- Solar-ready
- Whole house ventilation system
- Additional home insulation for increased R-value

Scan for an eBuilt® home tour!



Our homes include eBuilt features

The home series, floor plans, photos, renderings, specifications, features, pricing, materials and availability shown will vary by retailer and state, and are subject to change without notice.