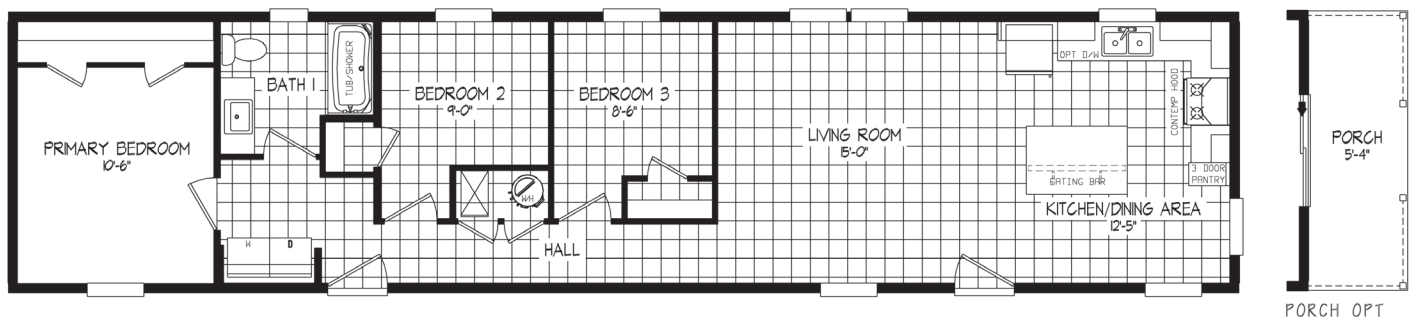


RAMSEY SERIES

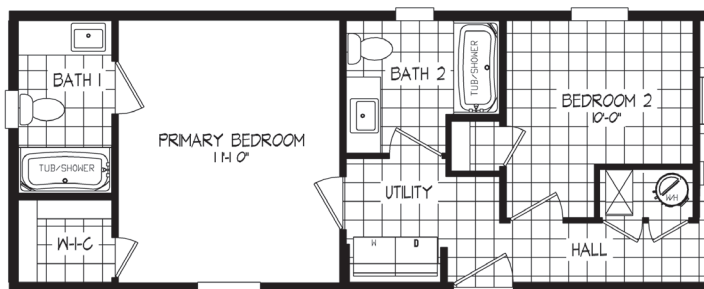


Ramsey 208-1

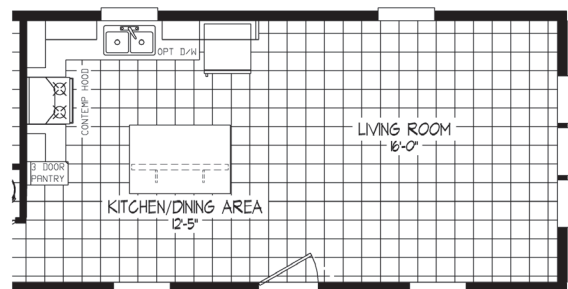
54RMS16663DH / 3 beds / 1 bath / 990 sq. ft.



PORCH OPT



2-BDRM/2-BATH OPT



FRONT LIVING ROOM OPT

Standard Features

INTERIOR

- 2 Pendant Lights Over Island (Where Applicable)
- LED Ceiling Lights Throughout
- Flat Ceilings Throughout
- 8' Side Sidewall Height
- Shaw® Carpet with 8 lbs. Pad
- Shaw® Vinyl Flooring
- Orange Peel Ceiling
- Drywall Throughout (Except in Non Walk-In Closets)
- Wire Vented Shelving – Closets, Linens, Pantries
- White Hollow Core Interior Doors
- In Line Heat Duct
- Craftsman Style White DuraCraft® Trim
- Pfister® Faucets

KITCHEN

- DuraCraft® Cabinets
- 42" Overhead Cabinets with 2 Fixed Shelves
- Fixed Shelf Over Refrigerator
- Stainless Steel Sink with High Neck Pull-Down Faucet
- Drawer Bank In Kitchen
- 1 Row Ceramic Backsplash
- Kitchen Island (Floor Plan Specific)
- Fixed Shelf in Base Cabinets
- Soft Close Cabinet Drawers Throughout
- Crescent Edge

APPLIANCES

- Industrial Range Hood
- Samsung® 18 Cu. Ft. Refrigerator with Ice Maker
- Samsung® Gas Range SS
- Samsung® Dishwasher 53 DBA
- 40 Gallon Rheem Electric Water Heater
- SmartComfort® by Carrier® High Efficiency Gas Furnace

BEDROOMS

- Smoke Detector – All Bedrooms
- Egress Window – All Bedrooms
- LED Ceiling Lights Throughout
- Wire Self – All Bedroom Wardrobes
- PAAIVE Air Quality Improvement System

BATHS

- Square Chinette Lavs with Dual Control Faucets
- 60" 1-Piece Tub/Shower – All Baths
- Single Lever Tub/Shower Faucets
- Mirror Over Vanity – All Baths
- LED Broan Bath Vent – All Baths
- 1 Row Ceramic Backsplash
- Elongated Stools
- 36" Vanity Height
- DuraCraft® Cabinets

UTILITY

- 100 AMP/24 Circuit Entrance Service
- Wire and Vent for Washer/Dryer
- Programmable Thermostat
- AC Disconnect

EXTERIOR

- 36" 6-Panel Fiberglass Front and Rear Door
- Vinyl Lap Siding
- Ridgevent
- 3 1/2" Vinyl Trim around Windows and All Exterior Doors
- Kwikset® Door Locks
- Wind Wrap Exterior Walls

CONSTRUCTION

- 2" X 6" Exterior Walls
- HUD Seal
- Steel I-Beams Frame
- Tongue and Groove Floor Decking
- Self-Sealing Architectural Style Shingles

SCHULT ESSENTIALS

- Meets Zone III ENERGY STAR® Ready
- Additional Home Insulation for Increase R-Value: R-45, R-21, and R-22 in Sectionals, R-38 in Singles