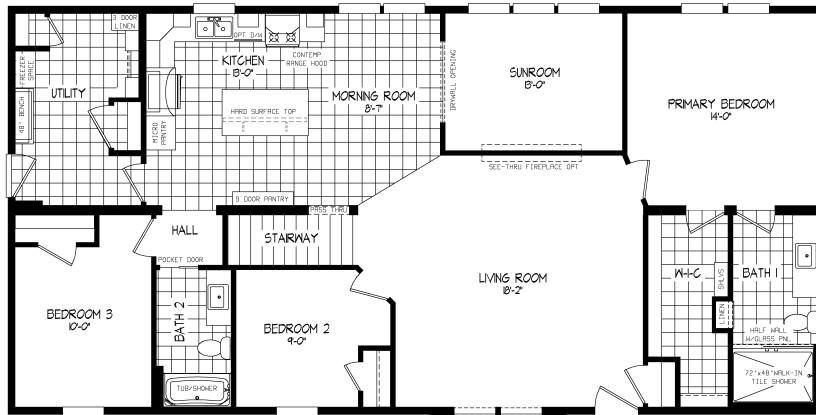


LEGACY SERIES



Legacy 377 MOD

54LGC32603AM | 3 beds | 2 baths | 1,800 sq. ft.



CRAWLSPACE OPT.



4TH BEDROOM OPT.



OFFICE OPT.



FURNACE AND WATER HEATER OPT.



DELUXE BATH OPT.
60" TILE SHOWER



LUXURY BATH OPT.
SOAKER TUB AND
60" SHOWER



LUXURY BATH OPT.
SOAKER TUB AND
WALK-IN TILE SHOWER

Standard Features

INTERIOR

- Flat Ceiling Throughout
- Shaw® Carpet with 8 lb Pad
- Shaw® Vinyl Flooring
- Textured Drywall Throughout
- Finish Drywall to Ceiling
- Tape and Textured Gypsum Ceiling
- 8' Sidewall Ceiling Height
- LED Can Lights Throughout
- 3 LED Can Lights - Kit
- 2 LED Can Lights - DR
- 1 LED Can Light - Hall (2 if 10' or longer)
- 1 LED Can Light - UTR
- 6-Panel Hollow Core Kaffe Passage Doors
- Perimeter Heat Registers
- Solid Hardwood Trim T/O
- Built-in Storage Bench in Utility Room (Where Floor Plan Allows)
- Pocket Door (Where Floor Plan Allows)
- Wire Shelves in Linen and Pantry
- 36" Counter height T/O

KITCHEN

- Hard Surface Island Countertop (Where Available)
- Drawer Over Door Cabinet Construction
- KCMA Kitchen and Bath Cabinets - N/A with DuraCraft®
- Deluxe Kaffe Shaker Cabinet Doors and Drawers
- 42" Overhead Cabinets with Two Adjustable Shelves and Finished Backs - N/A With DuraCraft®
- Hardwood Cabinet Fronts
- Brushed Satin Nickel Cabinet Door and Drawer Pulls
- Concealed Cabinet Door Hinges
- Ball Bearing Roller Guide Drawer System
- Self-Close Drawers
- Roll-out Center and Bottom Shelves in Kitchen
- Base Cabinets

KITCHEN (cont)

- Refrigerator Surround with Adjustable Shelf - N/A with DuraCraft
- Stainless-Steel Kitchen Sink
- Single Lever Faucet with Detached Sprayer
- Full Ceramic Backsplash To O/H
- Pot and Pan Drawers
- Kitchen Accessories Package
- Cutting Board with Caddy
- Drawer Plate Organizer

BEDROOMS

- Smoke Detector - All Bedrooms
- Egress Window - All Bedrooms
- Ceiling Light - All Bedrooms
- Wood Shelves/Rods in All Wardrobes

APPLIANCES

- Refrigerator 21 Cu. ft. - w/ice maker SS
- 30" Gas Range SS
- Built-in Microwave SS
- Industrial Range Hood SS

BATHS

- Deluxe Kaffe Shaker Vanity Doors and Drawers
- Hardwood Cabinet Fronts
- Drawer Bank - Bath #1
- Square Lavs with Dual Lever Faucets
- 72x48 Walk-in Shower - w/1/2 Glass Wall, 1 Recessed Shelf
- Rainfall Shower Head - Bath #1
- 60" One-Piece Fiberglass Tub/Shower - Bath #2
- Single Lever Tub/Shower Faucets
- Shower Curtain and Rod - Bath #2
- 36" Vanity Height - All Baths
- Framed Mirror Over Vanity with Decorative Light - All Baths
- Elongated Stools

BATHS (cont)

- Shut-off Valve at Stools
- Receptacle with Ground Fault Interrupter
- Broan Fan with LED Light - All Baths
- Brushed Satin Nickel Towel Bar and Tissue Holder - All Baths
- 1 row Ceramic Backsplash - Crescent Counter Edge

UTILITY

- 200 AMP Service with 2nd Conduit Through Floor
- Copper Wiring Throughout - Fully Grounded
- Wire and Plumb for Washer
- Wire and Vent for Dryer
- Laundry Overhead Cabinet
- 3-Way Switch in Utility Room and Stairwell
- Rocker-Type Light Switches
- GFI Recept - Kitchen Sink Area
- Water Shut-Off Valves T
- Carbon Monoxide Detector

INSULATION

- *R-50 Blown Ceiling Insulation with Sprayed Vapor Barrier
- *R-21 Fiberglass Insulation in Walls
- *R-5 Front & Rear Bay Rim Joist

EXTERIOR

- 36" 6-Panel Front Door with Deadbolt and Storm
- 36" 6-Panel Rear Door with Deadbolt and Storm
- Contractor Locksets
- Deluxe Lights at All Exterior Doors
- Vinyl Lap Siding with Structural Sheathing
- Wind wrap Exterior Walls
- 3 1/2" Vinyl Trim Windows and Front Door
- 2 Exterior Receptacles with GFI 1 Each Side of Homes

EXTERIOR (cont)

- Vinyl Low E Windows (meet 2015 Energy Code)
- Exterior Frost Proof Faucet Near Kitchen Sink
- Ice Shield

CONSTRUCTION

- Modular Construction
- Built to 60# Ground Snow Load
- Triple Rim Joists at Mating Line
- Metal X-Bracing in Flooring System
- Tongue & Groove Floor Decking
- 2" x 10" Floor Joist with Double Rim Joists 16" O.C.
- Joist Hangers at Mating Line
- 2" x 6" Sidewall Studs - 16" O.C.
- Full Length Structural Ridge Beam
- 5/12 Pitch with 16" Overhang on 28' Widess
- Continuous Ridge Vent Roof Ventilation
- Self-Sealing Architectural Style Shingles
- Basement Stairwell

Schult Essentials

- ecobee® Thermostat
- Ring® Doorbell
- Kwikset® exterior contractor lock sets
- Kwikset® interior door knobs
- Essential Grid Windows
- Pfister® Faucets
- Mortised Heavy-Duty Interior Door Hinges